

Specifications

Model	CO-10 (i-Pochette)		
Camera	Image pick-up device	1/4" CMOS sensor	
	Total pixels	1,612 (H) x 1,216 (V)	
	Effective pixels	1,600 (H) x 1,200 (V)	
	Frame rate	15 fps (max.)	
	Resolution	600 (H) TV lines	
	RGB output	300 (H) TV lines	
	Video output	300 (H) TV lines	
Optics	Zoom	8X digital	
	Lens	F3.0, f=3.39 mm	
	Shooting area	Max.	XGA: ≥ 340 x 255 mm (13 1/2" x 10") SXGA: ≥ 320 x 255 mm (12 5/8" x 10") WXGA: ≥ 340 x 204 mm (13 1/2" x 8")
		Min.	XGA: ≤ 53 x 40 mm (2 1/8" x 1 5/8") SXGA: ≤ 50 x 40 mm (2" x 1 5/8") WXGA: ≤ 53 x 32 mm (2 1/8" x 1 5/16")
		Focus	Auto/Manual
Functions	White balance	One-push	
	Exposure	Auto	
	Microscope mode	Provided	
	Freeze (Pause mode)	Provided	
	Split display	Provided (16-split)	
	Image save	Provided (16 JPEG files, internal storage)	
	Sync. system	Internal	
	Input/output	Internal selection	PC/Camera/Memory
PC interface	VGA active pass through	Provided	
	Analog RGB output	SXGA (1,280 x 1,024 @60 Hz)	
		WXGA (1,280 x 800 @60 Hz)	
		XGA (1,024 x 768 @60 Hz)	
	Video output	Composite	
RGB input	Provided		
USB port	Provided, USB 2.0		
Others	Accessories	Power cord, AC adapter, VGA cable, C-Video cable, Microscope adapter, USB cable, Carrying bag, User manual CD (En, Es, Pt, De, Fr, Jp), Quick start guide, Image Mate	
	Security slot	Provided	
Dimensions	Set up	143 x 446 x 338 mm (5 5/8" x 17 5/8" x 13 5/16")	
	Folded	143 x 262 x 37 mm (5 5/8" x 10 5/16" x 1 1/2")	
Weight	1.3 kg (2.9 lbs)		
Power source	12V DC, 2A (AC 100 – 240V, 50/60 Hz)		
Power consumption	6W (AC adapter included)		

H: horizontal, V: vertical
Design and specifications are subject to change without prior notice.
The images in this brochure are simulated.
"ELMO" is a trademark of ELMO COMPANY, LIMITED.
Other brand names and product names may be trademarks or registered trademarks of their respective owners.

What is a Document Camera?

Please visit our new website introducing you to the useful and effective ways of using the document camera. Let's start ICT in education with the document camera!

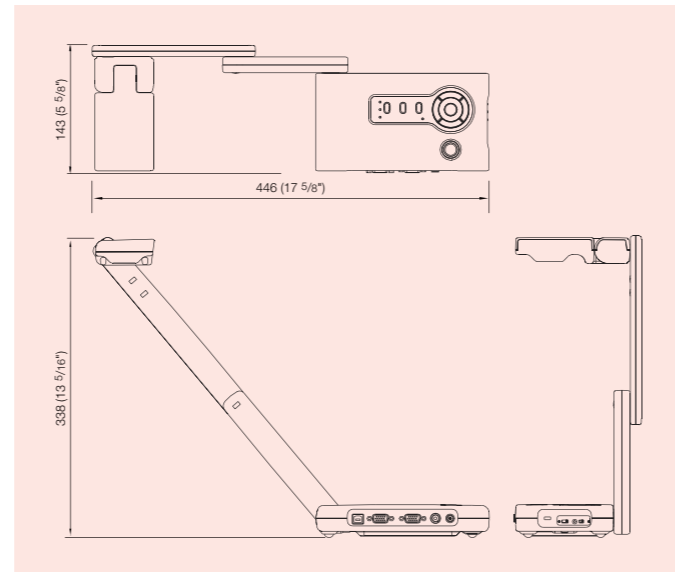
<http://www.elmo.co.jp/doc-cam/>

ELMO's Helping to Provide a Greener Future for Our Children

This ELMO product complies with RoHS Directive 2002/95/EC (Restriction Of the use of certain Hazardous Substances in electronic equipment). This compliance helps to ensure a healthier and greener environment for all our children.

Profile

All dimensions in mm (inch)



Rear Panel



Sister Model: L-1ex/TT-02 RX (for US only)



Teacher's + Choice

The ELMO Collection—
an array of models to
meet your needs



ELMO CO., LTD. is one of the sponsors for Japan Committee Vaccines for the World's Children (JCV).

JCV operates under basic guidelines and objectives of the Children's Vaccine Initiative (CVI) founded in 1990 by UNICEF, WHO, UNDP, the Rockefeller Foundation, and the World Bank.

ISO 9001
ISO 14001

ELMO CO., LTD. (Head Office and Factory's) QMS/EMS has been registered to ISO 9001 & 14001 : 2004.

Distributed by

Available at: **NETWORK Spectrum®**

Call: 301-733-0657

Email: sales@networkspectrum.com

Other products available at:

www.networkspectrum.com/gsaschedule/



ELMO

Document Camera
CO-10

Small Size, Big Benefits



Teacher's + Choice

i-Pochette

Ready... Set... Go! Cost-Effective Friendly Teaching Tool

Easy to Use **Contents Enhancer** **Great Features** **Innovative**

Teacher's Choice

i-Pochette

Only **1.3 kg (2.9 lbs)**

When not in use, the CO-10 folds down smaller than an A4-size piece of paper and fits into a handy carrying bag. And at only 1.3 kg (2.9 lbs), it is light enough to go anywhere you do.

Carrying Bag

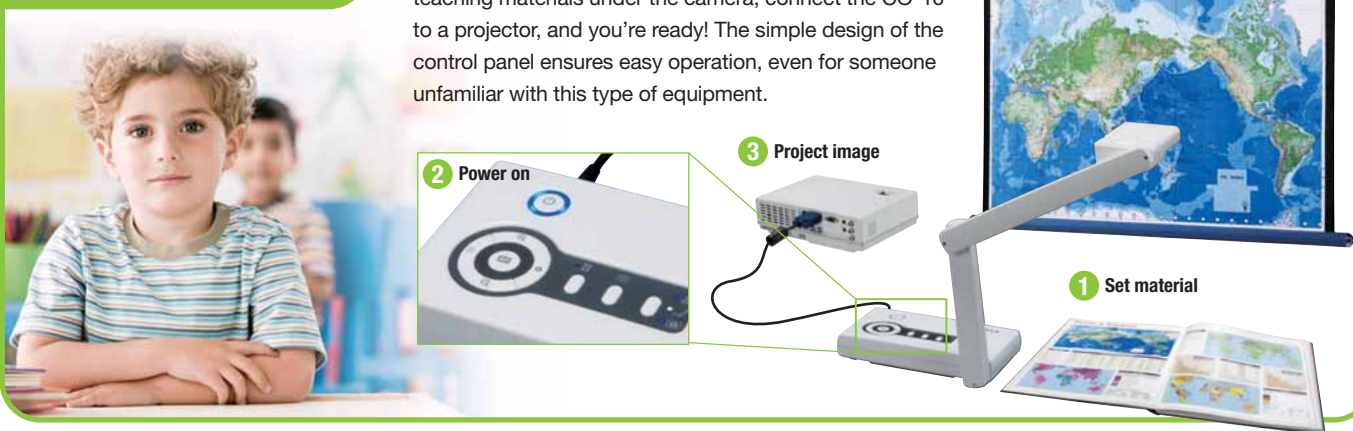
14.3 cm (5 5/8")

26.2 cm (10 5/16")

Social Studies

Easy Operation

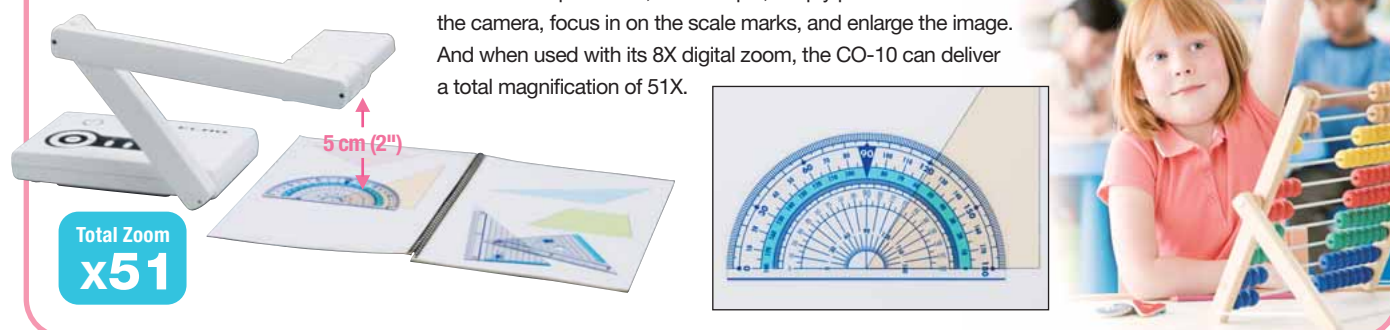
The CO-10 is surprisingly easy to use: just place your teaching materials under the camera, connect the CO-10 to a projector, and you're ready! The simple design of the control panel ensures easy operation, even for someone unfamiliar with this type of equipment.



Math

Auto Focus & 8X Zoom

The CO-10 can focus in on details a mere 5 cm (2") away, making classroom explanations ultra-easy to follow. To explain how to use a protractor, for example, simply place one under the camera, focus in on the scale marks, and enlarge the image. And when used with its 8X digital zoom, the CO-10 can deliver a total magnification of 51X.



Science



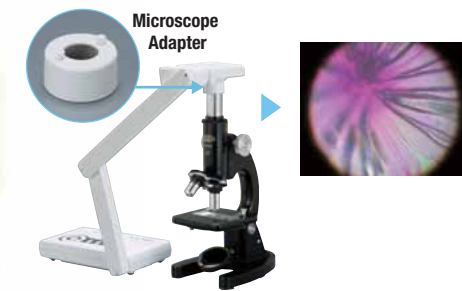
USB 2.0 PC Interface & Image Mate Software

The CO-10 is equipped with a USB 2.0 port for easy connection to a PC or an interactive whiteboard. With the bundled Image Mate software, you can easily control the CO-10 via a PC or import images captured with the CO-10 to a PC.



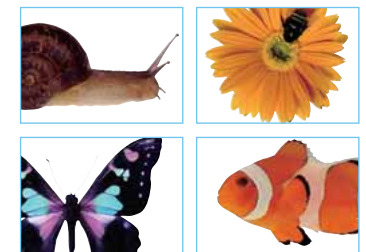
Microscope Viewing Mode

This mode lets you show microscope-slide images to give the entire class an up-close look at minuscule subject matter.



16-Image Memory

You can save up to 16 still image files to the CO-10—a handy function for reshooting previously displayed images or for quickly recording a presentation.



Art

Flexible Camera Arm

The movable camera head and arm can be freely positioned to capture images from any angle, allowing you to focus attention precisely where you want it.



2-Megapixel CMOS Image Sensor

The CO-10 uses a 2-megapixel CMOS image sensor and outputs images in SXGA resolution. Images shown in high resolution, down to the finest detail, are sure to keep your students interested.