

C2-260 PCI/ISA Card Video Scaler is based on TV One's exclusive CORIO®2 technology and provides high quality Up-Conversion from standard video formats (NTSC, PAL or SECAM) to Computer or HDTV signals. It also handles Cross Conversion from any PC/HD signal to any other. Video Inputs are two Composite, two YC or one RGBHV, YUV or YPbPr Component. The output is selectable as any computer resolution up to 2048x2048 at any vertical refresh rate and all HDTV resolutions up to 1080p. A wide variety of computer signal formats are available to support PC, Mac and Workstation formats.

All the functions can be controlled via a Windows Control Panel from the host PC via an RS-232 connection. An Infrared Port is located on the card's mounting plate and an optional Remote Control Unit can be used for initial setup of the unit. An OSD (On-Screen Display) is provided to assist in setup. Most third party control systems interface directly with the C2-260 as with the entire C2 range of products.

Variable Zoom to 10X allows you to enlarge any part of the video image to fill the entire computer screen and position controls allow you to move around to any area desired. Variable Shrink to as little as 10% allows the image to fit onto most displays. The full bandwidth chroma sampling insures faithfully reproduced, high resolution colors.

The C2-260 also features a wide variety of additional capabilities such as scaling of the RGB or YPbPr input, Genlock, PIP, Chromakey, Lumakey and Mixing. The **Key Mode** allows computer graphics to be keyed over an external Composite or YC signal or vice versa. The keyed image may be faded in and out. Due to the 4:4:4 sampling format, precise keying at the pixel level can be achieved. The **Mix Mode** permits glitch-free mixing between the computer image and external video. The **PIP Mode** allows either of the video inputs to be inset in a window over the full computer input.

Our exclusive AutoSet feature takes the hassle out of setup by automatically sizing and positioning the computer image to fit exactly on the video screen. All settings are stored in non-volatile memory and are retained even when power is switched off.

Edge Blending is a standard feature of the C2-260. Because of the ability to 'feather' any or all of the edges, multiple images can be aligned vertically, horizontally, or both to create unusual displays. Using multiple units, a large number of blended images can be achieved. Edge Blending is not limited to high resolution RGB computer images, but can be applied to any input. Gamma correction is employed to compensate for many of the problems faced when blending between projectors. Special preparation of the video in advance is not necessary, since all processing is done within the unit.



Key Features of the C2-260

- Up Conversion and Cross Conversion
- Automatic Incoming Resolution Detection
- 2x CV, 2x YC, 1x RGB/YUV/YPbPr Inputs
- Multiple Worldwide Television Standards
- I/O Computer Resolutions to 2048x2048
- I/O HDTV Resolutions to 1080p
- 1x RGB or YPbPr Output
- Control by RS-232 or IR Interface
- Windows Control Panel included
- Optional IR Remote Control
- Variable Image Zoom to 10X and Shrink to 10%
- Scaling of the RGB or YPbPr Input Signal
- Mix, PIP, Chromakey and Lumakey
- Edge Blending
- AutoSet - Automatic picture sizing



This symbol on a product indicates that it is powered by CORIO®2 technology, the most flexible video processing engine now available.

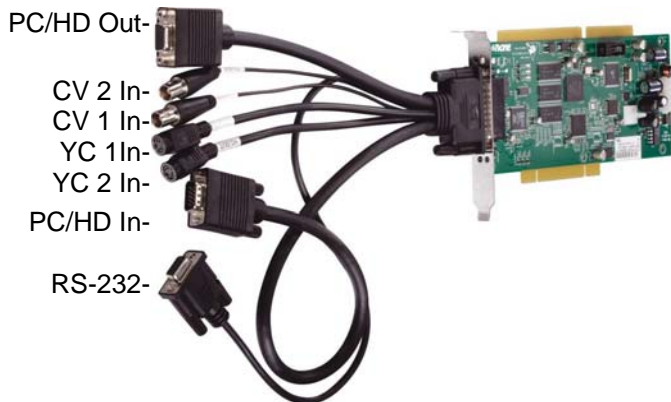
Unlike most manufacturers, who use third party chipsets to provide video conversion, TV One has developed its own proprietary technology known as CORIO®2. This frees TV One products from the constraints imposed by third parties and results in an unsurpassed degree of flexibility. Products based on third party chipsets have a feature set frozen at the introduction of the product. Since the CORIO®2 video processing engine is entirely firmware based; it can be upgraded at any time by downloading the latest firmware version from the support website and flash upgrading the unit in the field. This enables new features to be added to units many years after the initial purchase. This "obsolescence insurance" means that a CORIO®2 based product can always be upgraded to the latest version of that model.

Specifications

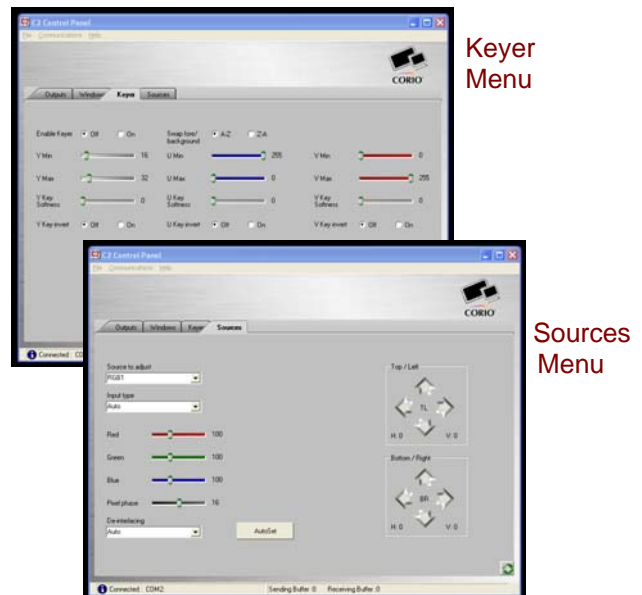
Video Inputs	(Note 1)
Television Standards	NTSC, PAL and SECAM
Composite Video	2x via BNC on Breakout Cable
YC (S-Video)	2x via 4-Pin Mini-DIN on Breakout
Computer Input	(Note 1)
RGB, YPbPr, YUV	1x via HD15
Format - Analog	RGBHV, RGBS, RGsB, YPbPr
Sync	TTL Level, 10KΩ, Pos or Neg
Termination	Into 75Ω
R-G-B Level Range	0.5-2.0 Vp-p
Scan Rate Detection	Automatic
PC Resolutions	Any up to 2048x2048
HDTV Resolutions	Any up to 1080p
Max Horiz Scan Rate	150KHz
Computer Compatibility	PC, Macintosh, Workstations
Computer Output	(Note 1)
Format - Analog	RGBHV, RGBS, RGsB, YPbPr
Connectors	1x HD-15 Female
R-G-B Level	0.7 Vp-p
PC Resolutions	Any up to 2048x2048
HDTV Resolutions	Any up to 1080p
Vertical Refresh Rate	Any to 250Hz
General	
Size and Position	Automatic via AutoSet or Manual
Image Size	User-Definable Presets
Image Freeze	One Video Frame
Settings Memory	Non-Volatile
Zoom Range	Variable to 10X Zoom
Shrink Range	Variable to 10%
Image Mirroring	Horizontal and/or Vertical
Horizontal Filtering	Full Digital
Conversion Technology	Proprietary – CORIO®2
Color Resolution	24-bit (16.8 Million Colors)
Digital Sampling	24-bit, 4:4:4 format
Firmware Memory	Flash, Upgradeable via RS-232
Video Decoder	9-bit Digital
De-Interlacing (NTSC-PAL)	Pixel-level Motion Adaptive

General (Continued)	
Comb Filter Decoding	Adaptive
Film Mode (NTSC)	3:2 Pulldown
Video Adjustments	Contrast, Brightness, Saturation, Hue (NTSC), R-G-B Levels
Operational Modes	
Key	Chromakey or Lumakey
Mix	PC to/from Video
PIP	Variable Window Size & Position
Control Methods	
Local	Via Included software
Infra-Red	Via Optional Remote Control
RS-232 Interface	Via D9 Female Conn. (Note 1)
Warranty	
Limited Warranty	2 Years Parts and Labor
Regulatory Compliance	
PCI/ISA Card	FCC, CE, CSA, RoHS
Mechanical	
Size (W-D)	100mmx204mm (4"x8")
Weight (Net)	0.14kg (0.31lbs)
Environmental	
Operating Temperature	0° to +50° C (+32° to +122° F)
Operating Humidity	10% to 85%, Non-condensing
Storage Temperature	-10° to +70° C (+14° to +158° F)
Storage Humidity	10% to 85%, Non-condensing
Power Requirement	
12 VDC @ 800ma	Via PC Hard Drive Connector
Accessories Included	
1x Breakout Cable	HD-44 to Various Connectors
1x Operations Manual	Provided on CD
1x Control Software	Microsoft Windows Based
Optional Accessories	
IRC5	Infrared Remote Control
Note	
(1) All Video and PC connections are via a breakout cable.	

C2-260 with Breakout Cable Attached



Sample Windows Control Panel Menus



Available at: NETWORK Spectrum®

Call: 301-733-0657

Email: sales@networkspectrum.com

Other products available at:

www.networkspectrum.com/gsaschedule/